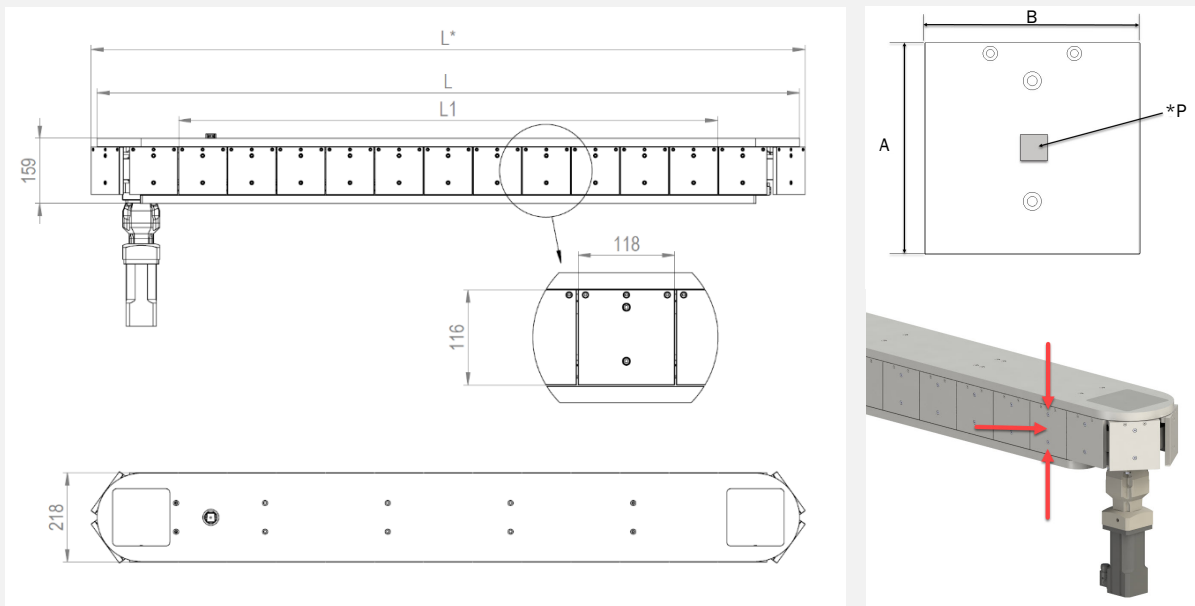


## Customer data:

Company:		Name:	
Department:		Phone:	
Address:		E-Mail:	
ZIP / City:			

- Product informations    
  Callback    
  Visit    
  Offer    
  Cycle time calculation    
  CAD-Data

## Dimension drawing:



Denomination	0	1	2	3	4	5
Number of middle modules	0	1	2	3	4	5
Total amount workpiece carrier	20	30	40	50	60	70
Total amount working stations	12	22	32	42	52	62
Working stations per side [L1]	6	11	16	21	26	31
Total length L [mm]	1117	1717	2317	2917	3517	4117
Working length L1* [mm]	720	1320	1920	2520	3120	3720

Dimension workpiece carrier	
WC length A [mm]	116
WC width B [mm]	118

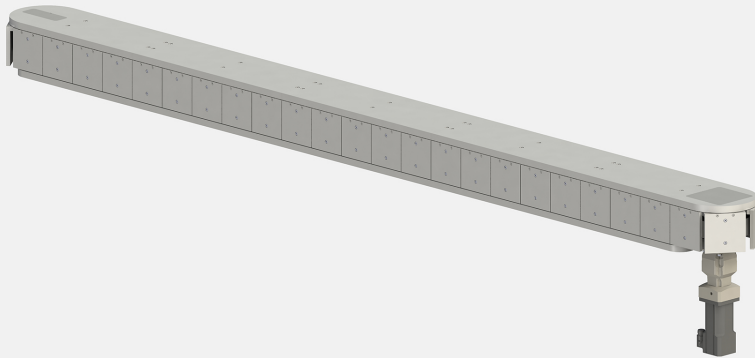
L1\* Working length where an elongation factor of 1,00135 must be applied.  
 Repeat accuracy: up to  $\pm 0.05$  mm

P\*= Space must be kept free for index sticker (20x20mm), please provide location.

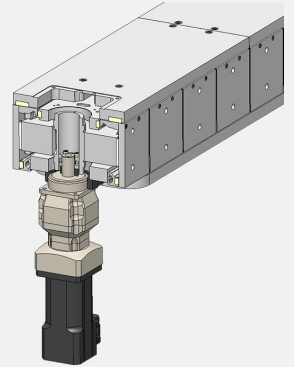
## Workpiece carrier:

- |                               |                                     |
|-------------------------------|-------------------------------------|
| ▪ Dimension A (cross direc.): | ▪ Workpiece (form / type):          |
| ▪ Dimension B (travel dir.):  | ▪ Distance/position center of mass: |
| ▪ Components per WC:          | Vertical - process force:           |
| ▪ Compon. weight [gr.]:       | Horizontal - process force:         |
| ▪ Workpiece weight [gr.]:     | Bottom - process force:             |

## Illustration LTM-H



## Illustration drive unit



### Drive toothed belt:

- |   |  |
|---|--|
| <ul style="list-style-type: none"> <li>▪ Drive:</li> <li>▪ Motor: Afag (Standard)<br/>Other</li> <li>▪ Brake:</li> <li>▪ Mounting kit: Afag (Standard)<br/>Other</li> </ul> | <ul style="list-style-type: none"> <li>▪ Servo controller: Servo controller with Profinet-interface<br/>Servo controller with Profibus-interface<br/>Other</li> <li>▪ Cable length:</li> <li>▪ Gearbox:</li> </ul> |
|---|--|

### PLC (only informative) manufacturer:

- Desired repeat accuracy:
- Desired cycles/min:
- Desired workpiece carrier feed time:
- Cycle step length:
  - \* Toothed belt length (number of WC x 120mm) must be divisible by cycle step
- Continuous operation:
- Number processing work. stations:
  - \* Working length must be divisible by the cycle step (e.g. 20, 30, 40, 60, 120, 240)

### Notes (e.g. applications per working station):

For all customer specific changes, submit corresponding documents and drawings.

Name

Date

Page 2 of 2