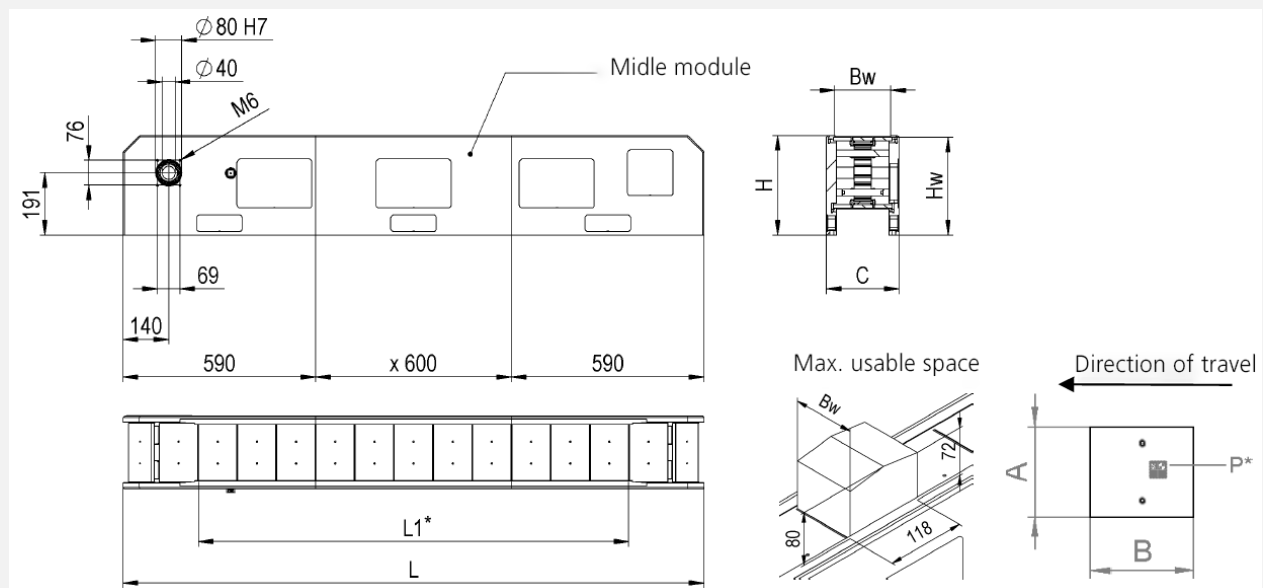


Customer data:

Company:	<input type="text"/>	Name:	<input type="text"/>
Department:	<input type="text"/>	Phone:	<input type="text"/>
Address:	<input type="text"/>	E-Mail:	<input type="text"/>
Zip / City:	<input type="text"/>		

- Product informations
 Callback
 Visit
 Offer
 Cycle time calculation
 CAD-Data

Dimension drawing:



Denomination						
Number of middle modules	0	1	2	3	4	5
Total amount workpiece carrier	20	30	40	50	60	70
Total amount workpiece station	6	11	16	21	26	31
Total length L [mm]	1180	1780	2380	2980	3580	4180
Working length L1* [mm]	720	1320	1920	2520	3120	3720

Dim. workpiece carrier		
A [mm]	100	180
B [mm]	118	
C [mm]	142	222
Bw [mm]	82	162
H [mm]	305	
Hw [mm]	300	

L1* Working length where an elongation factor of 1,00135 must be applied. Repeat accuracy: up to ± 0.1 mm.

P*= Space must be kept free for index sticker (20 x 20 mm), please provide location.

Workpiece carrier:

- Dimension A (cross direc.):
- Dimension B (travel dir.):
- Components per WC:
- Workp. holder weight [gr]:
- Components weight [gr]:
- Drilling pattern WC
(provide by customer):

Note: Support up to 5000 N not necessary (depends on drilling pattern by customer).
Additional Support is to be provide by the customer and only for LTM-180 possible.

Illustration LTM-V

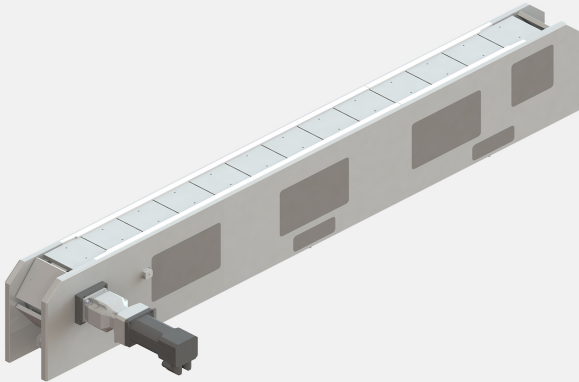
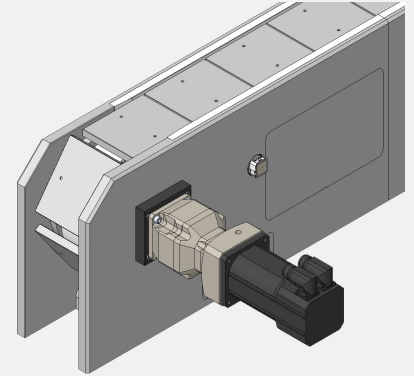


Illustration drive unit



Drive toothed belt:

- | | |
|-----------------------------------------------------------------------------------------------------------------------------------------------------------------------------|--------------------------------------------------------------------------------------------------------------------------------------------------------------------------------------------------------------------|
| <ul style="list-style-type: none"> ▪ Drive: ▪ Motor: Afag (Standard)
Other ▪ Brake: ▪ Mounting kit: Afag (Standard)
Other | <ul style="list-style-type: none"> ▪ Servo controller: Servo controller with Profinet-interface
Servo controller with Profibus-interface
Other ▪ Cable length: ▪ Gearbox: |
|-----------------------------------------------------------------------------------------------------------------------------------------------------------------------------|--------------------------------------------------------------------------------------------------------------------------------------------------------------------------------------------------------------------|

PLC (only informative) manufacturer:

- Desired repeat accuracy:
- Desired cycles/min:
- Desired workpiece carrier feed time:
- Cycle step length:
 - * Toothed belt length (number of WC x 120mm) must be divisible by cycle step
- Continuous operation:
- Number processing work. stations:
 - * Working length must be divisible by the cycle step (e.g. 20, 30, 60, 120, 240)

Notes (e.g. applications per working station):

For all customer specific changes, submit corresponding documents and drawings.

Name

Date

Page 2 of 2